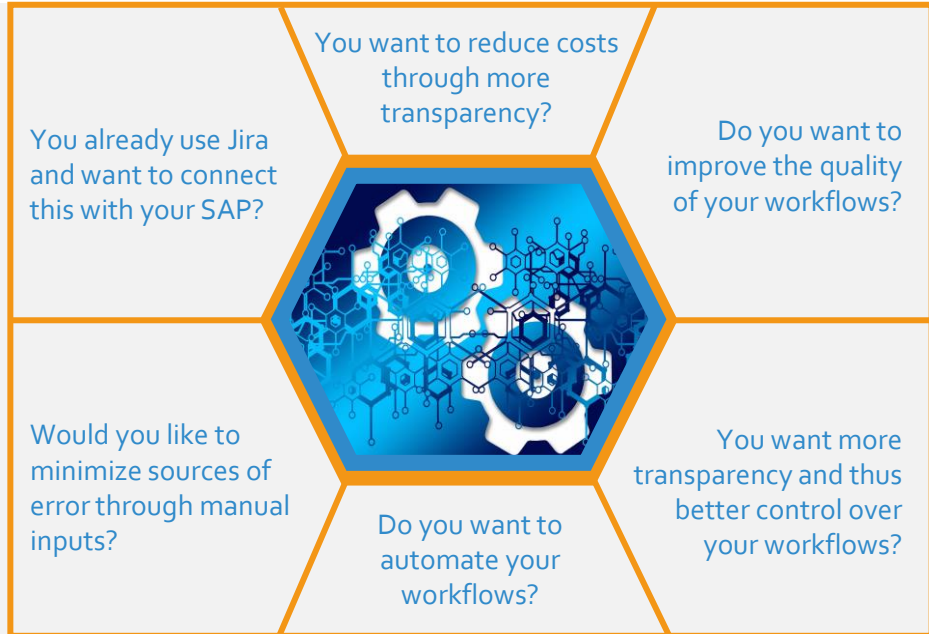


## SAP Transport Management with Jira

Are you familiar with these  
problems ?



# SAP Transport Management with Jira

## The challenge

**Accelerate and support your SAP development processes by linking your SAP with Jira. You thus increase the quality of your workflows and reduce costs.**

Imagine if you could save process costs through automation and at the same time keep track of your transport orders this way. This is possible with a simple tool!

The integration of [SAP Transport Management with Jira](#) allows you to better control and keep track of your workflows internally. You can control and edit your SAP transport requests directly from Jira.

You are always informed about the status of a process, can attach files, document the task and have control over any faulty or stuck jobs.

Avoid unnecessary manual entries and thus minimize possible sources of error.

## Our solutions offer

With [SAP Transport Management with Jira](#), we support you in automating and improving your processes. We make the necessary settings on the system side.

SAP Solution Manager is not required for the integration of [SAP Transport Management with Jira](#). Standardized interfaces are used. Furthermore, the solution is compatible with your SAP ECC and SAP S/4 HANA.

Do you need more information - call us or contact us via email. We are here for you.

## Our offer

### SAP Transport Management with Jira

One-time license  
CHF 10'000

Annual maintenance (21% of the one-time license) + access to updates und guaranteed release capability  
CHF 2'100

Rental price incl. maintenance  
CHF 6'100 / year

EXPRIS Solutions GmbH  
St. Gallerstrasse 150  
9230 Flawil

+41 71 891 25 00  
[info@expiris.ch](mailto:info@expiris.ch)

[www.expiris.ch](http://www.expiris.ch)